

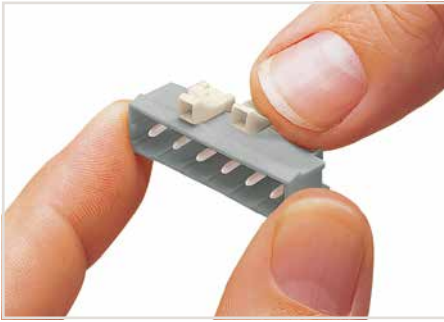
MCS MIDI Classic Connectors/Headers

Pin Spacing: 5/5.08 mm and 7.5/7.62 mm / Nominal Cross-Section: 2.5 mm²

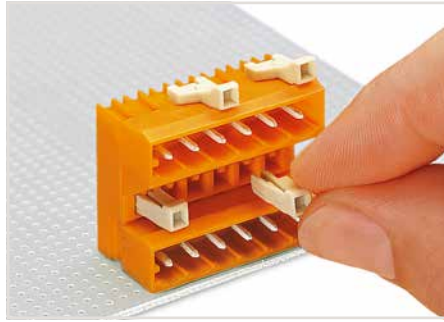
			Page
	MCS MIDI Classic Female Connectors, Straight and Angled, CAGE CLAMP® Termination	5/5.08 mm (0.197/0.2 inch)	394
		7.5/7.62 mm (0.295/0.3 inch)	454
	MCS MIDI Classic Female Connectors for Panel Mounting, CAGE CLAMP® Termination	5 mm (0.197 inch)	402
		7.5 mm (0.295 inch)	460
	MCS MIDI Classic Female Connectors, with Push-Buttons Push-in CAGE CLAMP® Termination,	5/5.08 mm (0.197/0.2 inch)	404
		7.5/7.62 mm (0.295/0.3 inch)	462
	MCS MIDI Classic Female Connectors, 2-Conductor, Push-in CAGE CLAMP® Termination	5/5.08 mm (0.197/0.2 inch)	410
		7.5/7.62 mm (0.295/0.3 inch)	466
	MCS MIDI Classic THT Male Headers	5/5.08 mm (0.197/0.2 inch)	414
		7.5/7.62 mm (0.295/0.3 inch)	470
	THR Male Headers	5 mm (0.197 inch) 7.5 mm (0.295 inch)	424 478
	MCS MIDI Classic Male Connectors, CAGE CLAMP® Termination	5/5.08 mm (0.197/0.2 inch)	432
		7.5/7.62 mm (0.295/0.3 inch)	486
	MCS MIDI Classic THT Female Headers	5/5.08 mm (0.197/0.2 inch)	440
		7.5/7.62 mm (0.295/0.3 inch)	492
	MCS MIDI Classic Male Connectors for Rail-Mount Terminal Blocks	5 mm (0.197 inch)	448
	Female Connectors for Rail-Mount Terminal Blocks	5 mm (0.197 inch)	450
	MCS MIDI Accessories		500
	Direct Marking		386
	General Accessories – Section 12		586
	Application Examples		514

MCS MIDI Classic

Description and Installation



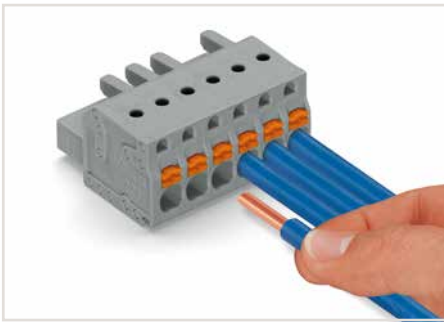
Coding a male header – fitting coding key(s).



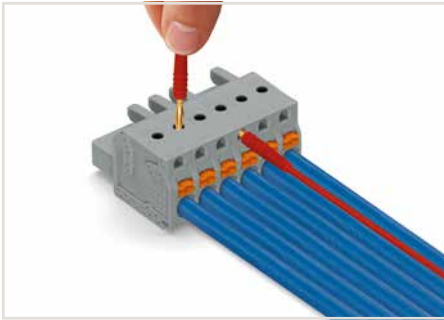
Coding a lower male header – inserting coding key(s).



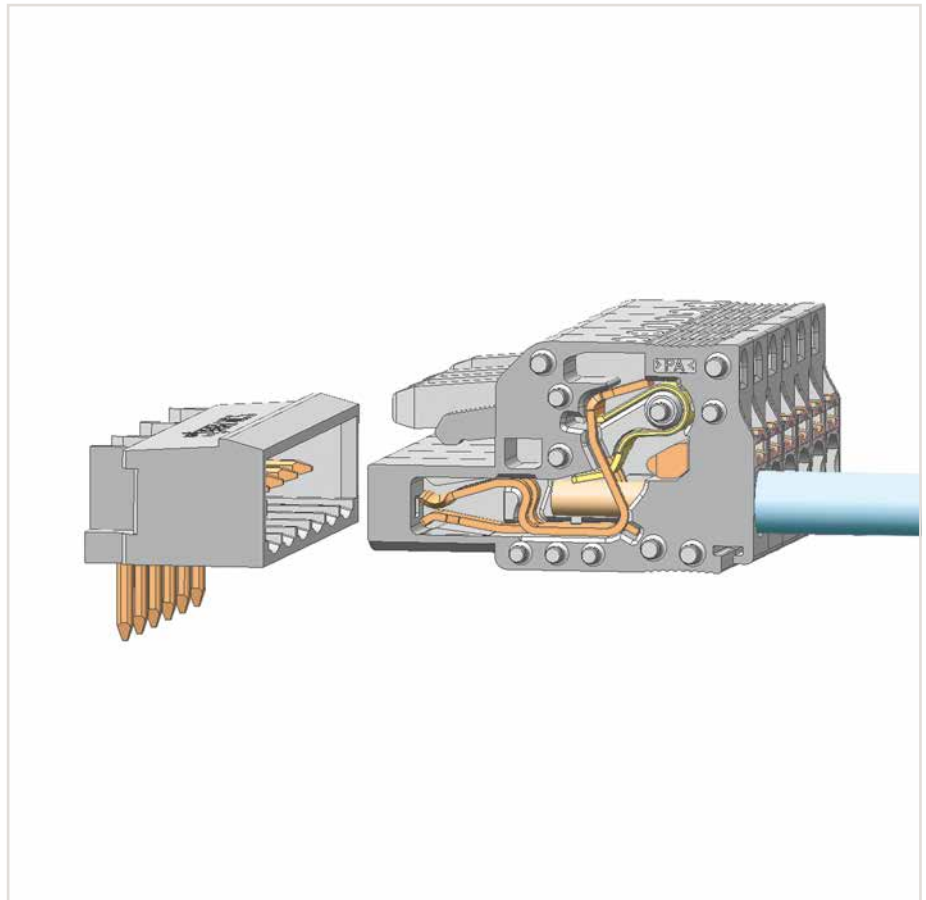
Coding a female connector – removing coding finger(s).



Push-in termination of solid conductors or fine-stranded conductors with ferrule



Testing parallel to conductor entry via integrated test ports – female connector with push-buttons and Push-in CAGE CLAMP® connection – touch contact perpendicular to conductor entry.



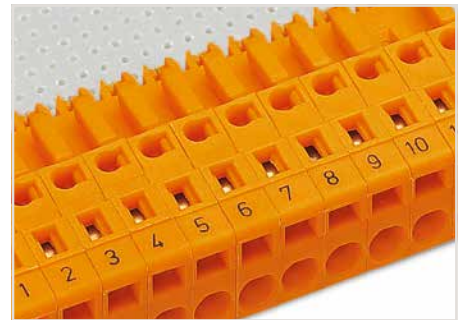
Pin spacing: 5/5.08 mm and 7.5/7.62 mm, Push-in CAGE CLAMP®



Inserting fine-stranded conductors into Push-in CAGE CLAMP® unit via push-buttons.



THR male headers in tape-and-reel packaging for SMT applications

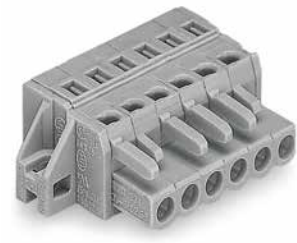


Labeling via direct marking or self-adhesive strips.

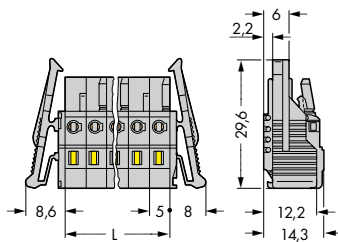
1-Conductor Female Connectors

Pin Spacing: 5 mm

MCS MIDI Classic



Dimensions (in mm):



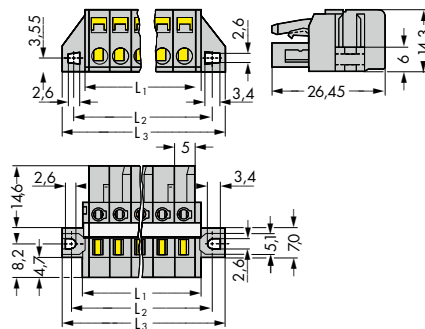
L = pole no. x pin spacing

1-conductor female connector,
with locking levers, gray,
5 mm (0.197 inch) pin spacing

Pole No.	Item No.	Pack. Unit
2	231-102/037-000	100
3	231-103/037-000	50
4	231-104/037-000	50
5	231-105/037-000	50
6	231-106/037-000	50
7	231-107/037-000	50
8	231-108/037-000	25
9	231-109/037-000	25
10	231-110/037-000	25
11	231-111/037-000	25
12	231-112/037-000	25
13	231-113/037-000	25
14	231-114/037-000	25
15	231-115/037-000	25
16	231-116/037-000	10
17	231-117/037-000	10
18	231-118/037-000	10
19	231-119/037-000	10
20	231-120/037-000	10
21	231-121/037-000	10
22	231-122/037-000	10
23	231-123/037-000	10
24	231-124/037-000	10

2- to 3-pole female connectors – one latch only

Dimensions (in mm):



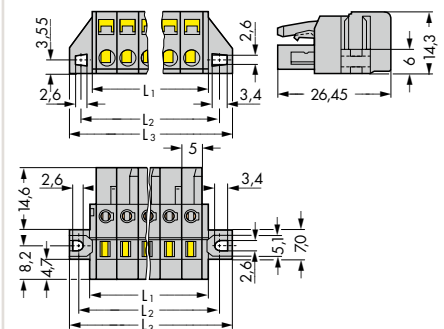
$L_1 = (\text{pole no.} \times \text{pin spacing}) + 3 \text{ mm}$
 $L_2 = (\text{pole no.} \times \text{pin spacing}) + 8.8 \text{ mm}$
 $L_3 = (\text{pole no.} \times \text{pin spacing}) + 14.8 \text{ mm}$

1-conductor female connector,
with flanges for racks and
through-panel mounting,
with reinforcing strips, gray,
5 mm (0.197 inch) pin spacing

Pole No.	Item No.	Pack. Unit
2	231-102/031-000	100
3	231-103/031-000	50
4	231-104/031-000	50
5	231-105/031-000	50
6	231-106/027-000	50
7	231-107/027-000	50
8	231-108/027-000	50
9	231-109/027-000	25
10	231-110/027-000	25
11	231-111/027-000	25
12	231-112/027-000	25
13	231-113/027-000	25
14	231-114/027-000	25
15	231-115/027-000	25
16	231-116/027-000	10
17	231-117/027-000	10
18	231-118/027-000	10
19	231-119/027-000	10
20	231-120/027-000	10
21	231-121/027-000	10
22	231-122/027-000	10
23	231-123/027-000	10
24	231-124/027-000	10

Cutout dimensions, see page 510, Table 1

Dimensions (in mm):



$L_1 = (\text{pole no.} \times \text{pin spacing}) + 3 \text{ mm}$
 $L_2 = (\text{pole no.} \times \text{pin spacing}) + 8.8 \text{ mm}$
 $L_3 = (\text{pole no.} \times \text{pin spacing}) + 14.8 \text{ mm}$

1-conductor female connector,
with flanges for panel mounting, gray,
5 mm (0.197 inch) pin spacing

Pole No.	Item No.	Pack. Unit
2	231-102/031-000	100
3	231-103/031-000	50
4	231-104/031-000	50
5	231-105/031-000	50
6	231-106/031-000	50
7	231-107/031-000	50
8	231-108/031-000	50
9	231-109/031-000	25
10	231-110/031-000	25
11	231-111/031-000	25
12	231-112/031-000	25
13	231-113/031-000	25
14	231-114/031-000	25
15	231-115/031-000	25
16	231-116/031-000	10
17	231-117/031-000	10
18	231-118/031-000	10
19	231-119/031-000	10
20	231-120/031-000	10
21	231-121/031-000	10
22	231-122/031-000	10
23	231-123/031-000	10
24	231-124/031-000	10

Cutout dimensions, see page 510, Table 1

Available upon request (depending on quantity required):

- Gold-plated or partially gold-plated contact surfaces

Depending on the version requested, "item no. suffix .../010-000" is added to the "basic item no."